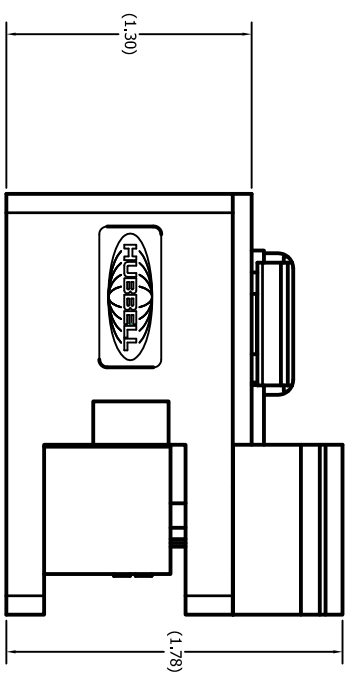
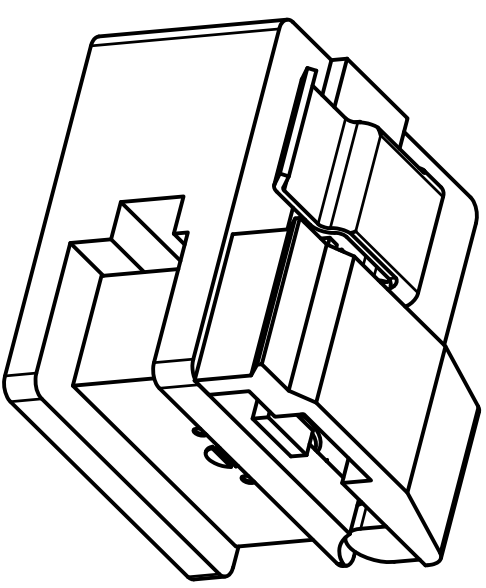
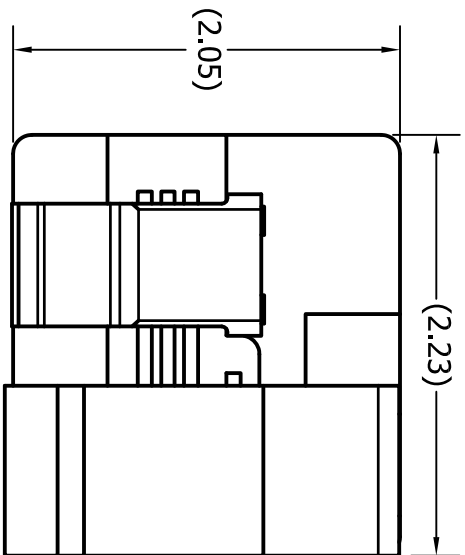


ITEM NO.	DESCRIPTION	QTY.
1	FIBER OPTIC CLEAVE TOOL	1
2	WASTE BIN (NOT SHOWN)	1
3	INSTRUCTION SHEET (NOT SHOWN)	1
4	HARD PLASTIC STORAGE CASE	1

CATALOG NUMBER	DESCRIPTION
OFCLV5	PRECISION FIBER OPTIC CLEAVE TOOL, GRAY



- NOTES:
1. RATED FOR 48,000 CLEAVES (3,000 CLEAVES PER BLADE POSITION).
  2. SUITABLE FOR BOTH MULTIMODE AND SINGLEMODE FIBER.
  3. REPLACEMENT BLADES AVAILABLE BY ORDERING PART NUMBER: OFCLV5RB.
  4. SPECIFICATIONS SUBJECT TO CHANGE WITHOUT NOTICE

REV.	ECN	DATE	DESCRIPTION	CHG BY	APPD BY
1	17919	5/7/12	INITIAL RELEASE	CG	

Created on AUTOCAD		<p>DIMENSIONING AND TOLERANCE PER ANSI Y14.5M-1982 UNLESS OTHERWISE SPECIFIED, DIMENSIONS ARE IN INCHES (MM). TOLERANCES .XX = ±.01 (.25) .XXX = ±.005 (.127) .XXXX = ±.0025 (.0635) ANGLE TOL. ±1°</p>	
<p>IN ACCEPTING OUR DRAWINGS, BLUEPRINTS, OR SUPPORTING DOCUMENTATION FOR QUOTATION OR OTHER PURPOSES, YOU AGREE NOT TO DISCLOSE TO OTHERS THE IDEAS, INFORMATION, OR DESIGNS SHOWN HEREIN, AND THAT YOU WILL MAKE NO USE OF SAME WITHOUT PERMISSION</p>		<p>PROJECT REFERENCE: 024-12</p>	<p>HUBBELL Hubbell Premise Wiring HUBBELL INCORPORATED (Delaware) 23 CLARA DRIVE, SUITE 103 MYSTIC, CT 06355</p>
<p>MATERIAL: SEE NOTES</p>		<p>DRAWN BY: C. GRIBBLE 5/7/12</p>	<p>TITLE: FIBER OPTIC CLEAVE TOOL SINGLEMODE/MULTIMODE COMPATIBLE</p>
<p>APPROVED BY:</p>		<p>CHECKED BY:</p>	<p>SIZE: B DRAWING NO. HWS13043C SCALE: 1/1</p>
		<p>REV. 1</p>	<p>SHEET 1 OF 1</p>